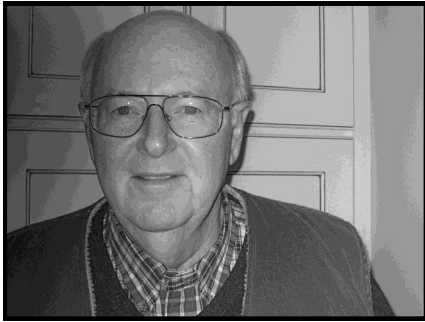




Elk-Skegemog Lakes Association Newsletter-January, 2011



President's Message

I am the newly elected President of ESLA and this is my first message to my fellow riparians. My family has owned property on the east shore of Elk Lake since 1957, and my wife Karen and I had our first date at the Elk Rapids Cinema in 1958. I joined ESLA in the late 1970s when my stepfather, Milford Kerry, was president of ESLA. I became an ESLA Director in 1998. In 2008, we became year round residents, and I began serving as the Vice President of ESLA. I look forward to working with our very talented Directors in serving the interests of our fellow riparians. I, like all of you, treasure our uniquely beautiful Grand Traverse region and especially our properties on these pristine waters.

I would like to extend a special welcome to Rapid River riparian owners. In 2008, a group of property owners along Rapid River approached ESLA for assistance in addressing concerns about the sediment deposition in the western end of the River (see article on page 6). Subsequently, Dave

Lawicki formed the Friends of Rapid River that met on three occasions during 2010. Discussions between our organizations led to the ESLA Board of Directors unanimously approving the inclusion of the 244 Rapid River riparian owners from Rugg Pond to Torch River in the ESLA membership domain. The Rapid River watershed is an integral part of the of the Elk River Chain of Lakes 500 square mile watershed, and any adverse conditions in Rapid River are of vital concern to those of us who live on Torch River and Skegemog and Elk Lakes. Dave Lawicki has been appointed as a Director at Large to the ESLA Board of Directors and Rapid River will be combined with Torch River in ESLA's Zone E. During 2011, we will carefully define the issues related to the increasing sediment in the River and develop alternate solutions. We will work closely with the Kalkaska Conservation District, The Watershed Center of Grand Traverse Bay and other organizations. We encourage our new Rapid River partners to join ESLA by completing the dues envelope enclosed with this Newsletter. Dues to ESLA are tax deductible.

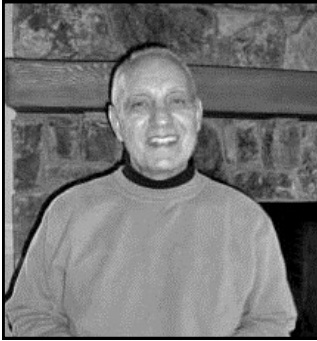
I wish to acknowledge Pete DiMercurio for the outstanding leadership he provided ESLA over the past two years. He successfully addressed head-on those issues that arose during his watch. We are fortunate that Pete is staying on the Board as Captain of Zone C and as the Chair of our newly formed Finance Committee.

INSIDE THIS ISSUE:

President's Message	1
Past Pres. Message	2-3
Water Quality	4-5
Rapid River	6-7
Hydrofracking	8-9
Tip of the Mitt	10
ESLA Officers	11
Board Meetings	12
In Memoriam	12

2011 Annual Dues

Enclosed with this Newsletter is the 2011 ESLA annual dues envelope. ESLA is a volunteer organization which depends totally on member dues to support its mission and activities. The \$25 basic dues remains one of the lowest of all the conservation organizations in this region. Please renew your membership or become a new member. Remember to provide your current email address on the dues envelope.



Past President's Message

How did it get so late so soon? (Dr. Seuss):

To the ESLA membership/riparians, thank you for allowing me to be your Elk-Skegemog

Lakes Association (ESLA) President these past two years. It has been an absolute pleasure, a great learning exercise, particularly satisfying and hopefully, helpful to the tenets and progress of ESLA. I have been privileged to have worked with your newly elected ESLA President, Bob Kingon. Bob has approximately 12 years of ESLA experience, most recently as our Vice President (VP) during my tenure. He is prepared, well networked and appreciates the dynamics, of maintaining relationships, that best assist ESLA's foundation and requirement to communicate and inform our membership and riparians. Bob is a great selection; congratulations Bob!

Going Forward: I will continue to serve on the ESLA Board in capacities that best serve ESLA and our new President. Additionally, I will maintain my position as ESLA representative on the Tip of the MITT, Watershed Council Board of Directors. I will also volunteer as the Zone C Captain/Director to continue to provide a voice, on agenda items, for the southwest/south end of Elk Lake.

Thanks for the Memories!: Special thanks to Glory Wiltjer, ESLA web site manager, whose patience working with me has been deserving of sainthood! As we move to a new web site design, she and the Communications Committee have been creative and open to many presented proposals/possibilities which will result in a member/riparian user friendly new web based platform that should serve ESLA well into the future.

Board of Directors, Donors of Inestimable

Time and Talent: My appreciation to the ESLA Board of Directors who supported my agenda, of water quality, membership, and education, despite my lack of history with the Board, The Board, with a wide range of diverse talents, voluntarily served and continue to serve in the best interests of all ESLA members/riparians within our geographical boundaries.

To Mike Hamilton, ESLA Treasurer for seven years, who maintained the position until a replacement was secured (Bob Stibbs, new ESLA Treasurer stepped forward). Mike established a legacy of a disciplined and fundamentally sound accounting process, verified through several audits, assuring that ESLA finances were excellently managed and the Board's fiduciary responsibilities were fulfilled.

To Bob Kingon, (ESLA VP during my tenure, always available for whatever mission I launched him on), who will be an outstanding ESLA President due to his skills and long history on the ESLA Board in a variety of capacities. He provides a universal ESLA perspective for both lakes (Elk, Skegemog) and an understanding of the unique needs of our rivers (Elk, Torch and Rapid).

To Past ESLA Presidents' Bob Bremer, Mary Anne Rivers and Al Wagner whose wise counsel allowed me an opportunity to develop and establish priorities that focused within the boundaries of ESLA and not to be distracted by peripheral issues.

To Thom Yocum, ESLA Water Quality Specialist, Intern Coordinator/Mentor and Environmental Protection Chair who gives much; know that you are appreciated!

Past President's Message Cont.

To Dean Ginther, past President and Newsletter Editor; thanks for all that you do as the editor—a difficult and particularly thankless donation.

To Bev McCamman (Zone A), Carol Zenas (Recording Secretary) and Gene Ferries (Zone D) who stepped down from the Board after many years of donating their time and talent; you will be missed.

To Brian Taylor (Zone A), Dale Claudpierre (Zone B), Steve Flechter (At Large Director), Bob Stibbs (Treasurer) and Gina Dewildt (Zone E and web site co-manager) who stepped up to the Board; thanks for your talent and time donation. We welcome you to the ESLA Board.

To anyone who I may have omitted, it is not intentional. A blanket thank you is sincerely rendered. Know that your input and effort was genuinely appreciated.

To my wife Kathy who assisted me in too many ways during the past two years. Thank you for your encouragement, patience and assistance when I frequently and mysteriously created gridlock, on the computer, doing ESLA business. Additionally, thank you for being you!

Lastly, to the ESLA members/riparians, thanks to each of you for your continuing support of ESLA.

ESLA Interest in Possible Expansion of Courtesy Docks

Cheryl Werth, Elk Rapids Harbor Master, made a presentation during the December ESLA Board regarding the possible expansion of the courtesy docks. Currently, there are only four slips available for public use in the upper harbor. Soon after her presentation, the ESLA President, Bob Kingon, wrote the following letter:

Cheryl Werth
Harbor Master
Elk Rapids Village
P. O. Box 398
Elk Rapids, MI 49629

Dear Cheryl,

Thank you and Jack for attending the Elk-Skegemog Lakes Association (ESLA) Board of Directors meeting last Thursday. Your presentation was excellent and very thorough. As you could tell from the discussion, our ESLA Board members have a high level of interest and support for expanding the number of courtesy docks in the upper harbor.

Because the remainder of our agenda was so full, we did not have an opportunity to discuss the proposed options among ourselves. I am sure some members have specific concerns or follow-up questions, and some may have strong preferences for whether the expansion should be on the east or west side of the bridge. We also have not discussed the level of financial assistance ESLA will commit to the project. We will meet again in March for such discussions. Please keep me informed as to the progress of your planning regarding the Courtesy Dock project. As the Harbor Commission completes specific plans for the project, ESLA will provide a proposal for providing financial assistance.

If you would like our involvement in any way before March, do not hesitate to contact me.

Respectfully,

Bob Kingon, ELSA President

Updates from Thomas Yocum, Water Quality and Summer Intern Coordinator

Historic Warm Water in Elk and Skegemog Lakes!

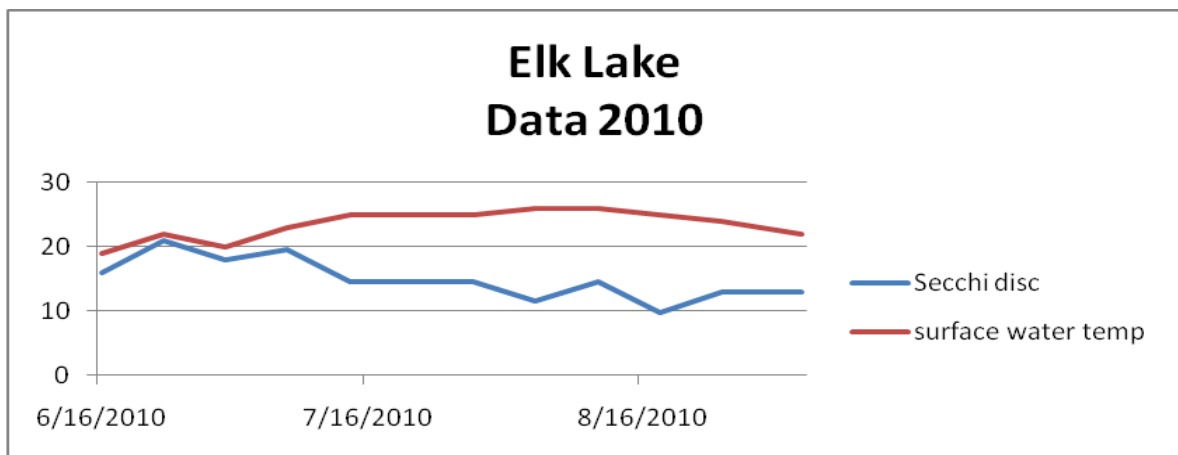
Normally, the temperature and Secchi disk readings for our lakes are not reported directly in the newsletter. This year I believe these regularly measured lake parameters have a direct bearing on water quality. Surface water temperature and Secchi disk readings are taken once each week, at the same point in each of our lakes. While temperature and water clarity may vary from one point to another, these readings allow us to make yearly comparisons.

This past summer proved to be the warmest on record for surface water temperature in both lakes. Prior to this summer, Elk Lake had only one recorded temperature of 25C in August of 2006 and Skegemog Lake reached this temperature on three occasions in August of 2006, July of 2007, and June of 2009 but none of these temperatures persisted more than one week. This last summer, Elk Lake saw the surface water temperature rise to 25 C (77F) by July 14 and continue at, or about, 26 C (78.8F), for six weeks. The highest temperatures were 26 C. on August 4 and 11. Skegemog Lake, likewise, saw a record-setting

stretch of warm water. The temperature reached 26 C. on July 9 and stayed there until August 13. These high temperatures probably had a direct bearing on increased algal growth in both lakes.

ESLA records, maintained by Tip of the Mitt Watershed Center, go back to 1992. As noted, only once has Elk Lake reached the 26 C temperatures. Skegemog Lake has never reached that temperature prior to 2010. Warm lake water can make swimming more comfortable, but it also allows aquatic vegetation, including algae, to grow more quickly and robustly. In correspondence with Kevin Cronk, TOMWC biologist, he responded that many inland lakes in the north had seen record-setting water temperatures and increasing algal growth along the bottom of the lakes. One trait in common with these lakes seems to be the presence of zebra mussels. The possible connections between these invasive mussels, warmer water temperatures and greater algal growth will be explored in a separate newsletter article.

The graph below indicates the Secchi disc readings in feet (lower line) and the surface water temperature readings in centigrade obtained this summer.



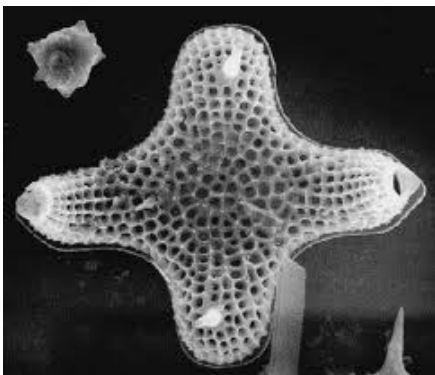
Water Quality Cont.

The 'Brown Crud' Revealed

The greatest measure of a lake's water quality comes from the analysis of the algae content. Over the past two or three years, the mystery of the 'brown crud' found on the bottom of Elk Lake has grown into a most compelling story. This past summer ESLA attempted to unravel this mystery by taking a pair of samples in June from Elk Lake. Subsequently, these samples were sent to PhycoTech in South Haven for identification and relative abundance.

The result from this pair of samples was negative for the presence of any harmful cyanobacteria, such as Microcystis or Lyngbya. The major component of the sampled content were algal forms of Bacillariophyta (see magnified example below). These harmless diatoms are important to the survival aquatic organisms within the lake because they are photosynthetic and provide a food source for larger aquatic life forms. The results for this analysis indicated that the water remains safe for both marine life and humans.

The presence of this algae in the samples might indicate that nitrogen and phosphorus levels are higher on the bottom of the lake than on the surface. This remains to be verified. Past testing of phosphorus and nitrogen at the surface has indicated relatively low levels in Elk and Skegemog lakes. It is important that the phosphorus levels in our lakes do not increase significantly because, among other reasons, many phosphorus-dependent organisms are cyanobacteria that cause harm to the environment.



ESLA Board of Directors Updates

Help Wanted—ESLA needs two volunteers from the Elk River – Spencer Bay area to place and maintain buoys in Elk River. Submerged logs have migrated toward the boat passage in Elk River creating potential hazards. Materials and supplies will be provided by ESLA. Stan Zenas and John Boucher will train volunteers during the placement of buoys in Torch River next spring. Those interested should contact Stan at czenas@live.com or Bob Kingon at rjkingon@prodigy.net.

Finance Committee—ESLA Directors approved the formation of a Finance Committee, which is a standing committee of the Board of Directors. The membership of which shall consist of the ESLA Treasurer and appointees from the Board as selected by the President. The Committee is responsible for reviewing and providing guidance for all of the organization's financial matters. Specifically, the committee carries out functions delineated in the Association's Investment Policy Statement and assures annual financial reviews/audits performed by independent reviewers. The current members of the committee are; Pete DiMercurio (chair), Robert Stibbs (ESLA Treasurer), Steve Flechter and Bob Kingon (ex-officio). Working as an ad hoc group in November, these members drafted an ESLA Investment Policy Statement. The Statement was discussed and unanimously approved by the Board of Director's during their December meeting. A copy of the Investment Policy Statement may be found on the ESLA website – <http://www.elk-skegemog.org> - "about" tab.

Ron Gurdak, reporting for the Government Relations Committee, indicated that the DNRE position is that the No-Wake regulation applies within 100 feet of docks, swim platforms or buoys in the Elk River. The Antrim sheriff deputies have been issuing citations and warnings in the River based upon the No-Wake Law. The Board agreed that no further action is needed. Ron will provide an article for the spring newsletter.

Rapid River Sedimentation and Kalkaska Conservation District

Over the years, the area in Rapid River from the mouth of the river as it empties into Torch River to 300 yards east of Aarwood Bridge has experienced massive sediment (sand) deposition on the riverbed, now estimated to be in excess of 15,000 cubic yards. At points, the original cobble river bottom is 5 feet below the current sand bottom. This deposition has led to a wider, shallower, and warmer river that negatively affects vegetation, fish and other vertebrate and invertebrate habitat, and navigation.

The primary sources of sediment are believed to have been addressed with the installation of 25' x 68' super core culverts and approach paving at the Wood Road crossing (2003) and the Kellogg Bridge Road crossing (2005.) However, sediment disposition continues to occur and is affecting the Torch River Bayou, the area where the Rapid River converges with Torch River, and eastward toward Freedom Park in Rapid City. So, there remain secondary sources that need to be identified.

Various solutions have been suggested from a number of different sources over the past few years. These include dredging the sand from the River, bagging the sand and placing the bags on islands or next to riverbanks, placing and maintaining sand traps at appropriate points, and/or a periodic "drawdown" of Rugg Pond.

The expected replacement of Aarwood Bridge might afford an opportunity to address the sand deposition. However, a recent engineering study found muck when boring samples were made and it was determined that the ground could not support the weight of the new bridge as currently designed.

During the summer of 2010, concerned Rapid River property owners formed the Friends of Rapid River to address the sedimentation issue and develop solutions. ESLA has joined them in this effort and as a combined entity; we may better

qualify for grant assistance once an appropriate solution is identified.

ESLA is working with the Kalkaska Conservation District (see article below), Traverse Bay Watershed Center, Tip of the Mitt Watershed Council and others to determine what steps need to be taken to fully document the sediment problem and its effects, and the pros and cons of alternate solutions. We will report progress in future newsletters and on the ESLA website.

Kalkaska Conservation District Eliminated

In another indication of the budget woes for Michigan, the Kalkaska County Board of Commissioners eliminated the Soil Conservation District Office from the County budget this week (January 2) along with their MSU Extension Office and 4H programs. The following news story was taken from the UpNorthLive.com website (see <http://www.upnorthlive.com/news/story.aspx?id=562952> for the complete article):

KALKASKA -- Kalkaska county leaders are shocked after their plan to cut close to 3-quarters of a million dollars from the budget has been completely changed. Commissioner Debbie Kimbell tells 7&4 news that what really took her off guard was how extensive the changes are. Originally they planned to reduce county employee wages and hours but now 2 entire departments will be cut. That original budget was just approved last week but at an organizational meeting last night -- newly elected Chairman Mike Cox made a surprise announcement that he was throwing that plan out the window. Instead, he's going to cut the Michigan State Extension Office and the Soil Conservation District.

A 4 to 3 vote at Monday night's Kalkaska Commissioners meeting sealed the fate of two huge county departments. The Michigan State Extension

Kalkaska Conservation District Eliminated—Cont.

sion Office and the Soil Conservation District are gone as a part of the \$700,000 in cuts for the 2011 budget.

Board Chairman Mike Cox says it made sense to cut non-mandated departments, "It's unfortunate that we had to cut youth programs but on the other hand people in the areas I serve are more concerned about law enforcement and having detectives available and feeling safe in their homes."

Michigan State Extension and the Conservation District say that it's hard to understand how a cut like this can be justified and that their programs will be missed by the Kalkaska community.

Manager of the Kalkaska Conservation District Russ Larowe says, "Recreation programs, MSU extension, baseball soccer, the cart walking trail the horse project where they have horse programming—so if we cut those programs we cut the people who spend the most money on taxes. Their kids, their families end up receiving the least benefit from tax dollars."

By cutting Michigan State Extension--the popular 4-H Youth Development Program will be gone. MSU Extension District Coordinator Patrick Cudney says, "This would be the only county in the state of Michigan without a 4-H Youth Development Program and that's just the youth development part." Cudney goes on to say Kalkaska will also miss out agriculture, economic development and health programs.

Cox says the departments may be gone but programs can still continue, "There's no reason these programs can't continue under some different area it doesn't have to be sponsored under 4-H."

The commission will meet next Wednesday to finalize plans to go forward with cutting these departments. Representatives from both the Michigan State Extension Office and the Soil

Conservation District say they will be there for their last chance to voice their concerns.

In response to this action by the Kalkaska County Board of Commissioners, ELSA President Bob Kingon sent the following letter:

January 7, 2011
 Michael Cox, Chair
 Stuart McKinnon, Vice Chair
 Kalkaska County Board of Commissioners

Gentlemen,

Elk-Skegemog Lakes Association (ESLA) represents over 400 riparian property owners on Rapid River, Torch River and Lake Skegemog. I am writing as President of ESLA to urge you to reconsider the elimination of the Kalkaska Soil Conservation District Office. The work they have done particularly in the Rapid River watershed has been invaluable in preserving the quality of our waters and environment in Clearwater Township.

Just this month, ESLA is joining with The Friends of Rapid River, The Watershed Center of Grand Traverse Bay, Tip of the Mitt Watershed Council along with officials from Michigan's DNR and DEQ in initiating a complete inventory of the Rapid River with the goal of restoring the River to its natural condition. The Kalkaska Conservation District Office is viewed as a critical partner in proceeding with this project. The District staff are the ones with the greatest experience in the Rapid River Watershed and are seen as the project leaders in this initiative. To eliminate the Kalkaska Conservation District Office will seriously compromise this effort.

As evidenced by the quality and importance of their work in Clearwater Township, the District has contributed greatly to the quality of the environment throughout Kalkaska County. Please reconsider your decision.

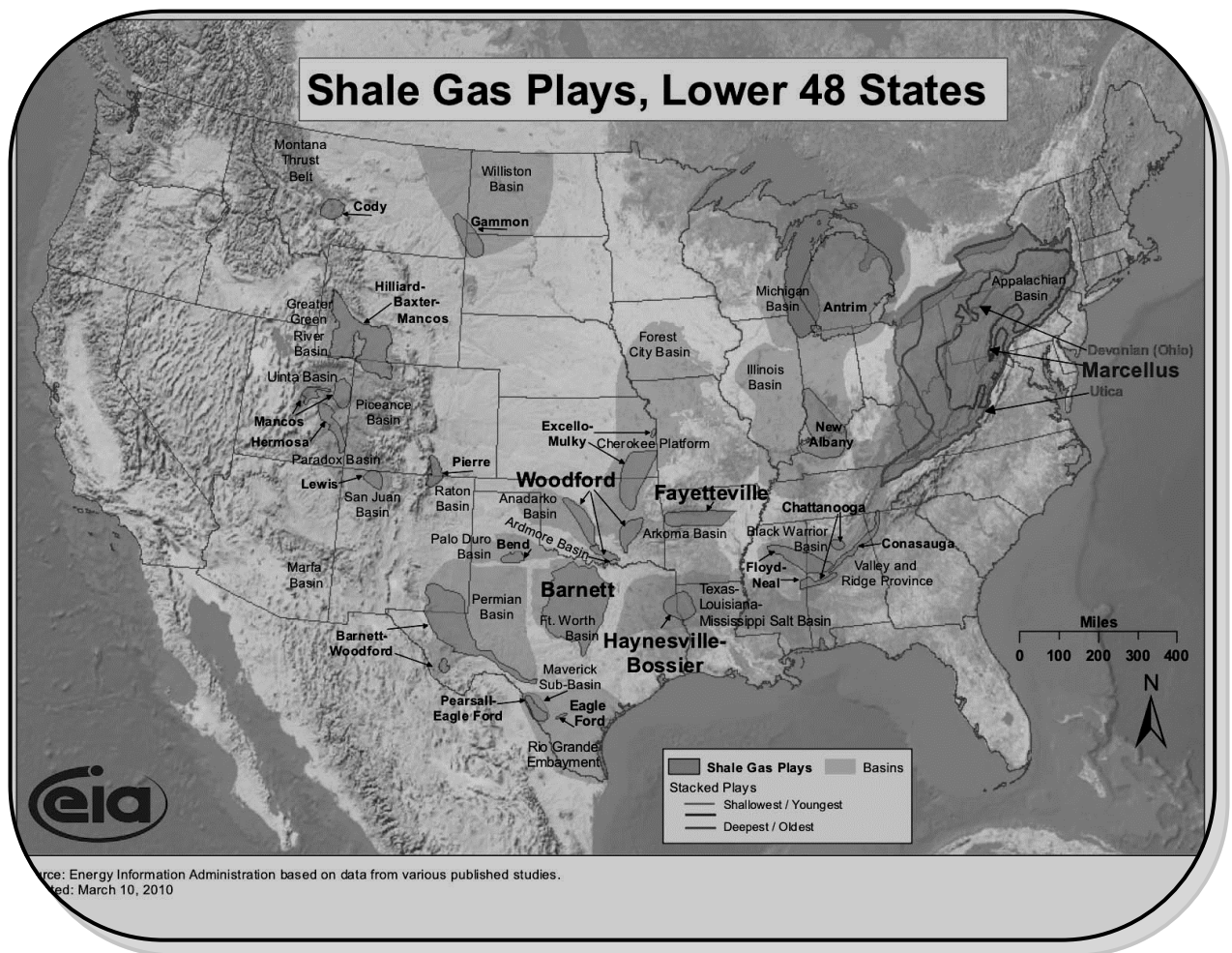
Respectfully,

Robert J. Kingon

Hydraulic Fracturing Update and Information

Hydraulic fracturing (hydrofracking) is a process in which liquid (water and sand and chemical additives) is pumped, under high pressure, into shale formations to fracture the rock and release trapped gas and oil. It is not a new process. Since 1980, around 12,000 wells have employed hydraulic fracturing in Michigan, typically in wells less than 2000 feet deep. However, with the re-

ting up the drilling operation. There has been considerable interest in Northern Michigan regarding the personal, social, economic, and environmental implications of this possible new gas exploration boom in Northern Michigan. The accumulating information related to this topic is too extensive and detailed to try to capture it in the limited space available in this Newsletter. Therefore, a variety of



cent drilling of an exploratory well in the deeper Missaukee County into the Utica Collingwood shale, there has been a rush to lease State and private land for expanded drilling. These deep wells require considerably more ground water (millions of gallons) for hydrofracing and require much larger pad sites (typically 5 acres) for set-

sources are provided below intended to inform anyone interested in learning more. Also read the Tip of the Mitt Watershed Council's (TOMWC) press release describing their recently submitted letter, which ESLA signed and supports, to the DNRE seeking additional safeguards.

Scientific/Technical Information and Resources

<http://www.watershedcouncil.org/learn/hydraulic-fracturing/> The Tip of the Mitt Watershed Council's (TOMWC) page on "Natural Gas Drilling & Water: an overview of hydraulic fracturing for natural gas in Northern Michigan". This is an excellent site for a concise overview with illustrations. Also, review a copy of the letter that TOMWC recently sent to the DNRE, which was endorsed by over 30 area conservation organizations (including ESLA), go to: <http://www.watershedcouncil.org/aquavists/aquavist-alerts/>

<http://www.friendsofthejordan.org/> Go to the tab on the right entitled "Deep Well Injection: A Position Paper" by Chris Grobbel, Ph.D. This is an in depth and well documented review of the geology and possible risks associated with deep wells in Northern Michigan. The Friends of the Jordan (River) have many reservations regarding deep injection well drilling and a history opposing the disposal well proposed in Star County.

http://www.michigan.gov/cgi/0,1607,7-158-52927_12540_13818-30992--,00.html Michigan Mineral Lease information with county maps (click on Antrim County)—see the location of hundreds of oil and gas wells in Antrim County.

http://www.msue.msu.edu/portal/default.cfm?pageset_id=580675 Antrim County MSU Extension Oil and Gas Information Site.

http://www.msue.msu.edu/portal/default.cfm?pageset_id=26792&page_id=576935&msue_portal_id=25643 A variety of information from MSU Extension on Oil and Gas Leasing; some sources from the oil and gas industry.

http://www.michigan.gov/deq/0,1607,7-135-3311_4111---,00.html DNRE site containing information on Michigan's gas, oil, and mineral resources, including regulation provisions.

Local DNRE Resources

There are two DNRE Geologists who have responsibility for oil and gas regulation and inspection in Antrim County—Ann Stephens (stephensa@michigan.gov), who is assigned to ER, Milton and other local townships and Mark Cromell (cromellm@michigan.gov), who has other townships in Antrim and other Northern Michigan counties.

Popular Media and Press

<http://www.northernexpress.com/editorial/features.asp?id=4709> Northern Express Editorial "Fear of Fracking" by Anne Stanton.

<http://www.propublica.org/series/buried-secrets-gas-drillings-environmental-threat> Pro Publica site--many articles on the environmental risks associated with gas drilling Also see <http://www.propublica.org/article/frac-act-congress-introduces-bills-to-control-drilling-609> for information of the "FRAC act", a bill introduced in congress to address some of the concerns associated with the lack of disclosure and exemptions providing to the gas drilling industry.

<http://www.industrialscars.com/gasdrilling> A compilation of color photographs depicting gas and oil drilling sites in the Catskills. Click on the picture to move forward to the next. These aren't "pretty" photographs.

November 14th [60 Minutes](http://www.cbsnews.com/sections/60minutes/main3415.shtml) segment on Fracking: <http://www.cbsnews.com/sections/60minutes/main3415.shtml>

<http://www.thenation.com/article/next-drilling-disaster> The Nation "The Next Drilling Disaster"



Zebra Mussels— Continuing Threat to our Lakes

Since their introduction in the late 1980s, zebra mussels

(*Dreissena polymorpha*) have spread rapidly to all of the Great Lakes and an increasing number of inland waterways throughout the United States and Canada. As we have noticed throughout our Northern Michigan lakes, these freshwater bivalves colonize anywhere they can attach their tiny byssal threads. Many lake residents have indicated that thick colonies have attached to their docks, boat hulls, and water intake pipes. They are highly prolific reproducers; female zebra mussels can produce 1 million eggs per year!

What you can do to prevent the spread of this invasive species

- Learn to identify zebra mussels
- Inspect and remove aquatic plants and animals from boat, motor and trailer.
- Drain your livewells, bilge water, and transom wells before leaving the water access area.
- Rinse boat and equipment with high-pressure hot water (104° F), especially if moored for more than a day, or dry everything for at least 5 days
- Report sightings of mussels to Tip of the Mitt Watershed Council by calling (231) 347-1181 or by e-mail at info@watershedcouncil.org .

To read the complete article at the Tip of the Mitt website, go to:

<http://www.watershedcouncil.org/learn/aquatic%20invasive%20species/zebra%20mussels/>

Redesign of ESLA website

This past fall, the ESLA Communications Committee began working with the Lawton Gallagher Group to redesign the ESLA website. At the time this article was written, it was not known if the new website would be fully functional but, please check www.elk-skegemog.org - if the new ESLA logo is in the banner, you are viewing the new website design.

The redesign is to create a site that is more functional for our members and other Elk-Skegemog watershed property owners. For example the banner will have buttons with dropdown menus, taking you directly to the content you are seeking. There will be “hot topic” buttons at the bottom of the home page to take you to the issues that should be of critical interest to ESLA members. Each topic page will include background readings, links to other pertinent websites, ESLA position statements, and actions that ESLA and/or others have taken.

The homepage will also have a picture gallery that rotates as you use the website or that you can browse. The gallery will expand as members submit their favorite pictures of our beautiful surroundings. There will also be a means for members to pay their annual dues and to sign up to receive the ESLA Newsletter via email. And, you can check the ESLA area weather for the current day and a two-day forecast.

One of the most important functions of the website is not apparent. An integral part of the website will be a database of members email addresses. This database will NOT BE VISIBLE OR ACCESSIBLE to anybody but the ESLA website manager. This database will allow ESLA leadership to communicate regularly via email with members about breaking news, issue specific information, opportunities, alerts, and the ESLA newsletter. As issues with threats to our watershed such as “fracking” arise, ESLA Directors may wish to take an advocacy role and communicate quickly with members suggesting contact with policy makers/implementers.

ELK-SKEGEMOG LAKES ASSOCIATION

Sept 1, 2010 — August 31, 2012

OFFICERS		Address	Phone	Email
Bob Kingon	Pres	10202 East Elk Lake Dr. Rapid City	322-6055	rjkingon@prodigy.net
Vacant	Vice Pres.			
Kathy DiMercurio	Rec. Sec.	535 Sixth St. Traverse City 49684	231-946-1687	kathygets@charter.net
Lou Ann McKimmy	Corr.Sec	8824 Penahguhme Rapid City	264-5653	mama7@chartermi.net
Robert Stibbs	Treasurer	10561 S. Elk Lake Rd. Williamsburg	231-264-6757	stibbs@omico.net

ZONE DIRECTORS

ZONE A

Ron Gurdak	Captain	8969 Cairn Hwy, Elk Rapids	264-6581	rongurdak@chartermi.net
Jim Sak		11329 Hanel Rd, Williamsburg	264-6069	jsak@tm.net
Brian Taylor		10407 E. Elk Lake Rd. Williamsburg	264-5344	leftytay@sbcglobal.net

ZONE B

Kent Reynolds	Captain	8534 Ridge Rd Rapid City	264-8360	kentreynolds@chartermi.net
Dean Ginther		11228 Shippey Ln, Rapid City	322-6286	dean.ginther@gmail.com
Jack Bay		11393 Center Rd. Traverse City 49686	947-1619	jackbay@charter.net
Dale Claudepierre		13952 Fairmont Dr. Rapid City 49676	322-2892	gindale70@gmail.com

ZONE C

Pete DiMercurio	Captain	535 Sixth St. Traverse City 49684	231-946-1687	petered06@charter.net
Jim Curnow		10183 Miami Beach, Williamsburg	267-5613	bj_curnow@charter.net

Zone D

Stan Zenas	Captain	7806 Hoiles Dr. Williamsburg	267-5764	sczenas@torchlake.com
Tom Klingler		7772 Hoiles Dr. Williamsburg	267-9352	klingler3@earthlink.net
Dave Hauser		9240 Skegemog Pt. Rd., Williamsburg	267-5624	dave@davehauser.net
Julie Courtade		9327 Fairview Dr., Williamsburg	409-1564	jkcourtade@hotmail.com

Zone E

Terry Woods	Captain	8211 Aarwood Trail NW. Rapid City	322-6075	woodse301@aol.com
Melissa Culver		9601 Shellway Dr. NW Rapid City	322-4909	MelissaCulver01@charter.net
Gina Dewildt		14199 Torch River Rd. Rapid City	322-2739	ginadewildt@hotmail.com

AT LARGE APPOINTED DIRECTORS

Glory Wiltjer	Web Site	8109 Skegemog Point Rd, Williamsburg	267-5522	glory.wiltjer@gmail.com
Thom Yocum	Water Quality	8447 N. Bayshore Dr Elk Rapids	264-6387	kstyocum@aol.com
Dean Ginther	Editor	11228 Shippey Ln, Rapid City	322-6286	dean.ginther@gmail.com
Dave Lawicki	Rapid River	6954 Aarwood Rd. Rapid City	944-3051	aarwood6954@hotmail.com
Steve Flechter	- Foundation	10426 E. Elk lake Dr. Rapid City	322-6015	flechtsp@comcast.net

ESLA
P.O. Box 8
Elk Rapids, MI 49629

***2011 Dues Renewal
Envelope Enclosed***

***2011 ESLA Board
Meeting Dates (in the
ER Government Center
Annex):***

March 17
May 12
July 14
September 15
December 15

In Memoriam

During this past year our ESLA community has lost four men who contributed greatly to the aims of our organization; Warren Goodell, Leonard Kline, Terry Snowday, and Duane Wamsley. Warren established ESLA's first electronic membership database and was the long-time ESLA liaison to many other environmental organizations in the Grand Traverse Area. Leonard provided a watchful eye over the Elk Rapids Dam when maintaining correct lake levels was a major concern. Terry promoted well the concerns of those riparians who lived in the Miami Beach area of Zone C. Duane was always the first Director to volunteer for ad hoc assignments that he always completed effectively. These men were all consistent attendees at ESLA Board Meetings and provided innovative approaches and great wisdom.

ELK-SKEGEMOG LAKES ASSOCIATION

OFFICERS

Bob Kingon	President	231-322-6055	rjkingon@prodigy.net
Vacant (needed)	Vice Pres		
Kathy DiMercurio	Rec. Sec.	231-946-1687	kathygets@charter.net
Lou Ann McKimmy	Corr. Sec	231-264-5653	mama7@chartermi.net
Robert Stibbs	Treas.	231-264-6757	stibbs@omico.net

PAST PRESIDENTS

Peter DiMercurio	2008-2010	231-946-1687	peterd06@charter.net
Dean Ginther	2006-2008	322-6286	dean.ginther@gmail.com
Mary Anne Rivers	2004-2006	267-5058	mrivers@netonecom.net
Al Wagner	2001-2004	322-4109	bigalwag@charter.net
Bob Bremer	1995-1997	322-6120	rapidrobert@torchlake.com
Ed Krigbaum	1992-1995	267-5164	ekrig@aol.com
Lou Wood	1989-1991	264-5648	
Stan Holzhauser	1984-1987	322-2594	holz4ofus@torchlake.com